

Gorgeous Bethesda North Rambler

5 BR - 3 FB - 2 Car Garage

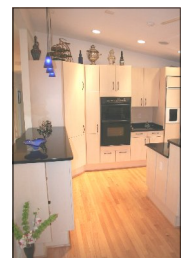


Great Value - Great Location - Great Condition

6004 Neilwood Dr | North Bethesda | MD | 20852

Sale: \$999,000. Rent: \$4,000 per month

Welcome to this gorgeous home located on a Cul-De-Sac street nestled in the park-like setting of Luxmanor area! Enjoy spectacular large main level with top of the line kitchen, kitchen island and bar, large windows, skylights and lots of recessed lights. Among this house special features you will also find 2 wood burning fireplaces, glimmering hardwood floors, second kitchen and a full in-law suite, remodeled marble baths, supersized 2 car garage. Great location with close proximity to schools, shopping, recreational facilities, major commuter routes, places of worship and the Metro. Welcome and enjoy!



Nimrod Shmul—GRI - Wallace & Associates



Llewellyn
REALTORS®



Visit our website
www.ShmulCorp.com
www.ShmulHomes.com

301-424-0900 X 208

Phone: 301-765-1373
Mobile: 301-529-8221
Fax: 301-983-0548
E-mail:
nimrod@shmulcorp.com



Map and Satellite Image

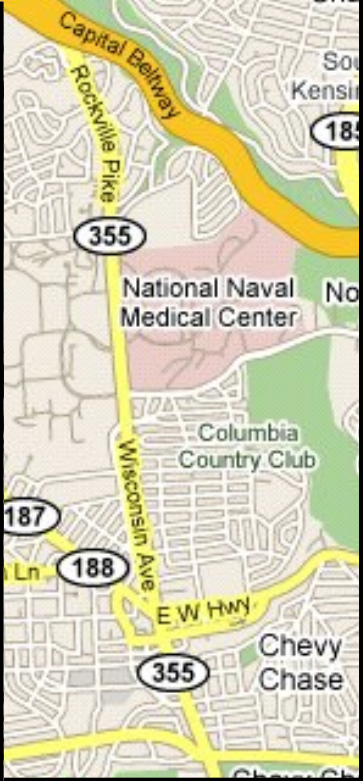
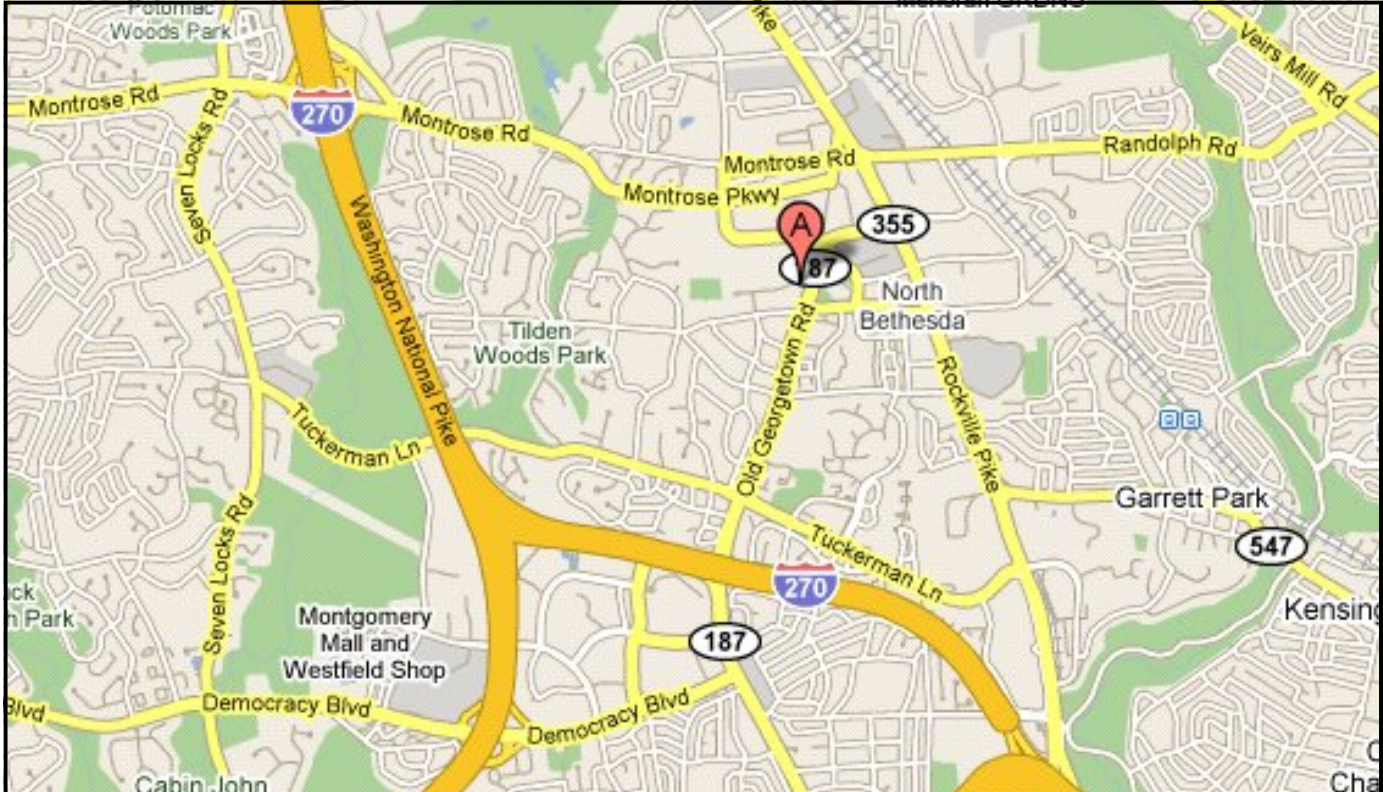


Photo Gallery



Special Features

Special Features

Prestigious family community of Neilwood/Luxmanor area
Located on a gorgeous, private lot on a cul-de-sac street
Beautifully landscaped yard including mature trees
Exterior light fixtures
Two car garage and wide driveway for off-street parking
Elegant decor and flowing floor plan for great entertaining and living
Glimmering hardwood floors on the main level
Gourmet kitchen with top of the line appliances, granite counters and plenty of cabinets/storage
Charming dining area with large table space open to the living room
Large and light filled family room with walkout to the back yard
Window treatments and new blinds included
Comfortable gas forced air furnace and electric central air conditioning
Gas water heater
Swimming pool membership available (only few block away)
White Flint Metro just 3 minutes away
White Flint Mall and Montgomery Mall just few miles away

Public Schools:

Luxmanor Elementary, Tilden Middle and Walter Johnson High

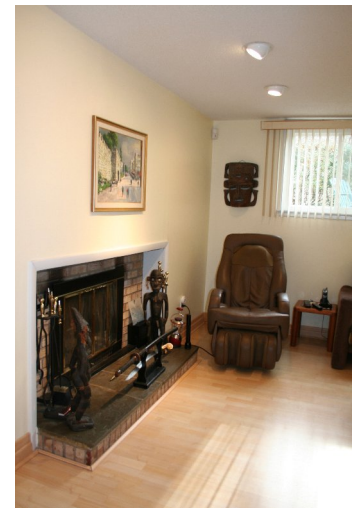
Visit www.ShmulCorp.com/6004Neilwood

Listed for rent by: Wallace and Associates Realty

Listed for sale by: Llewellyn Realtors INC

Estimated property tax and non-tax charges in the first full fiscal year: \$ 9,883

Lot Size: 0.46 Acres



For more information, call:

NIMROD SHMUL AND TEAM

OFFICE: 301.424.0900 x208

DIRECT: 301.529.8221

WEB: WWW.SHMULCORP.COM

WWW.SHMULHOMES.COM

Llewellyn

Serving With Integrity Since 1959

  LEADING REAL ESTATE COMPANIES OF THE WORLD