

1023 MONDRIAN TERRACE  
SILVER SPRING, MD 20904  
\$358,900

REAL ESTATE TAXES: \$2,550 YEARLY  
YEAR BUILT: 1985  
LOT SIZE: 1,540 SQ. FT.



### SCHOOLS

- \* Cannon Road Elementary School
- \* Key Middle School
- \* Springbrook High School



For more information, call:

**NIMROD SHMUL AND TEAM**  
REALTOR®

Direct: 301.529.8221 • Office: 301.424.0900 x208  
E-mail: [homes@shmulcorp.com](mailto:homes@shmulcorp.com)  
or visit [www.shmulcorp.com/mondrian](http://www.shmulcorp.com/mondrian)



Serving Maryland With Integrity Since 1959



Information deemed reliable but not guaranteed.

# BEAUTIFUL BRICK TOWNHOME



1023 MONDRIAN TERRACE • SILVER SPRING, MD 20904  
\$358,900

**NIMROD SHMUL AND TEAM**  
REALTOR®

Direct: 301.529.8221 • Office: 301.424.0900 x208  
E-mail: [homes@shmulcorp.com](mailto:homes@shmulcorp.com)  
or visit [www.shmulcorp.com/mondrian](http://www.shmulcorp.com/mondrian)

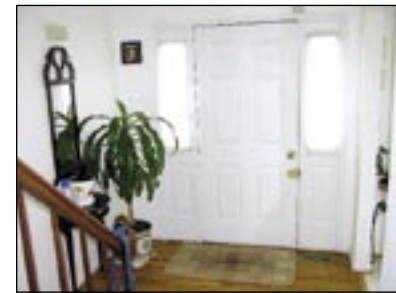


Serving Maryland With Integrity Since 1959



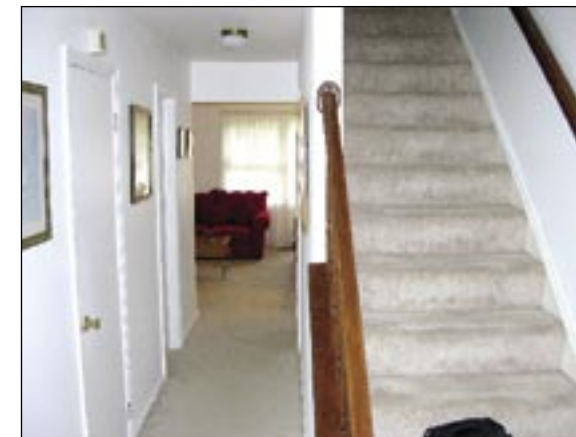
©2005 Llewellyn, Realtors®

Welcome to this spacious and bright townhome with three or four bedrooms and three and a half baths! This home enjoys many fine features throughout, including a relaxing two-level deck, large eat-in kitchen, finished lower level and so much more. Additionally, it is conveniently located close to schools, shopping, recreational facilities, major commuter routes and public transportation. **Welcome and enjoy!**



### MAIN LEVEL

- \* Inviting entry foyer with hardwood floor and coat closet
- \* Powder room
- \* Large eat-in kitchen with double-hung window to the front garden
- \* Spacious dining room overlooking the living room and the deck
- \* Large living room with sliding glass door to the deck
- \* Beautiful deck overlooking the creek and the backyard

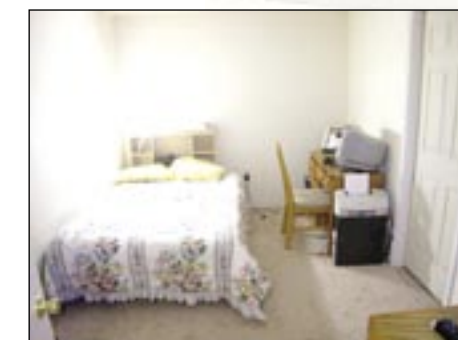


### UPPER LEVEL

- \* Spacious, light-filled master bedroom with private, full bath
- \* Two additional bedrooms with ample closets
- \* Second full bath off the hall

### LOWER LEVEL

- \* Handsome family room
- \* Very large office/fourth bedroom/playroom
- \* Utility/laundry room



*Welcome!*