

GORGEOUS FOUR-LEVEL SPLIT



1725 WILMART STREET
ROCKVILLE, MD 20852
\$599,000



www.shmulcorp.com/wilmart

*W*elcome to this wonderful split level with four bedrooms and two full baths nestled in the sought-after Montrose neighborhood! Spread out with this spacious floor plan including a lovely living room, dining room with exit to the deck and backyard, generous bedrooms, and a large recreation room with wood-burning fireplace. This home is in great shape with fresh paint, new carpeting on the main and lower levels, newer windows and sliding glass door, and a recently re-stained deck. Surrounded by lush landscaping, this home is just minutes from Metro, shopping, entertainment, places of worship, recreational parks, swimming pools, the new community center and much more. *Welcome and enjoy!*



ENTRANCE LEVEL

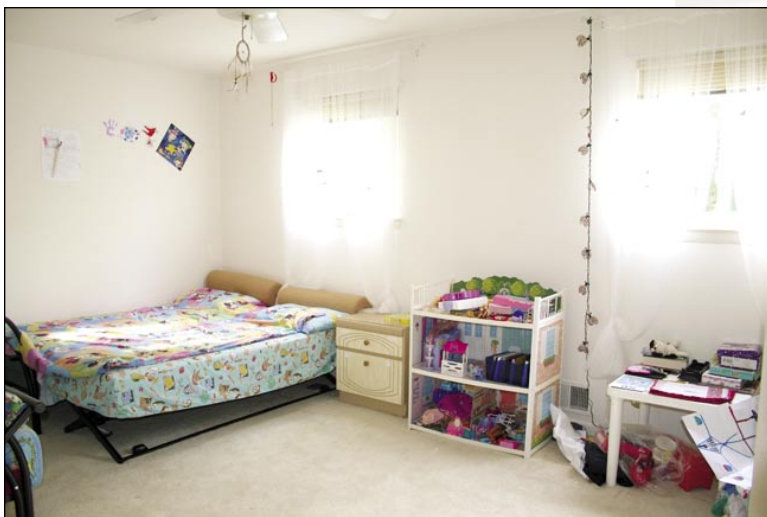
- * Foyer
- * 2 large bedrooms
- * Full bath

MAIN LEVEL

- * Large table space kitchen
- * Dining room with walkout to patio — great for entertaining
- * Spacious living room
- * New carpet with hardwood floor under



Welcome!



UPPER LEVEL

- * Large master bedroom
- * Full bath with dual entry
- * Additional large bedroom
- * Access to attic storage
- * Steam washed carpets with hardwood floor under

LOWER LEVEL

- * Large family/recreation room
- * New carpet
- * Wood-burning fireplace
- * Built-in cabinets
- * Storage and mechanic room
- * Walkout stairs to the driveway



1725 WILMART STREET
ROCKVILLE, MD 20852
\$599,000

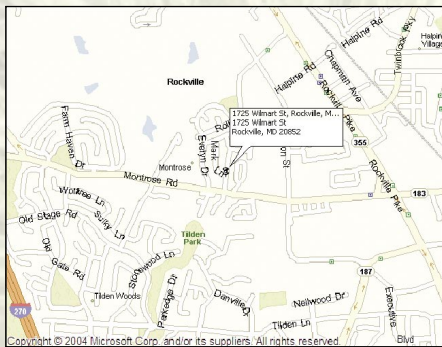
REAL ESTATE TAXES: \$4,623 YEARLY
YEAR BUILT: 1960
LOT SIZE: 12,497 SQ. FT. (0.29 ACRE)
SUBDIVISION: MONTROSE

EXTERIOR

- * Beautiful landscaped corner lot with mature trees
- * Charming storage shed
- * Patio
- * Deck
- * Driveway with two parking spaces

SCHOOLS

- * Farmland Elementary School
- * Tilden Middle School
- * Walter Johnson High School



You are invited to visit this beautiful house website at:
www.shmulcorp.com/wilmart

Information deemed reliable but not guaranteed.



For more information, call:

NIMROD SHMUL AND TEAM
OFFICE: 301.424.0900 x208
DIRECT: 301.529.8221
WEB: WWW.SHMULCORP.COM
WWW.SHMULHOMES.COM



Serving With Integrity Since 1959



LEADING REAL ESTATE
COMPANIES OF THE WORLD™